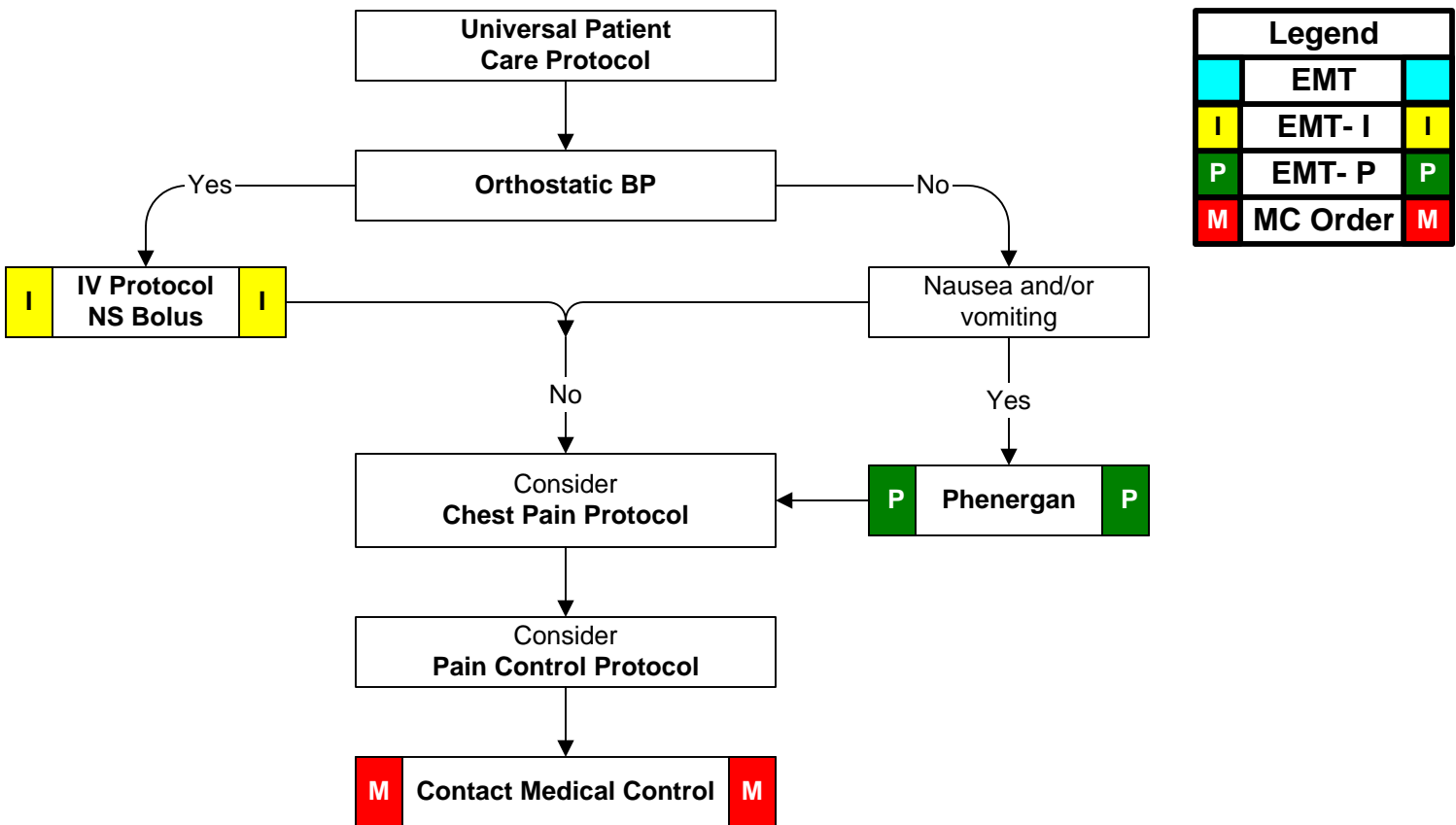


History: <ul style="list-style-type: none"> • Age • Past medical / surgical history • Medications • Onset • Palliation / Provocation • Quality (crampy, constant, sharp, dull, etc.) • Region / Radiation / Referred • Severity (1-10) • Time (duration / repetition) • Fever • Last meal eaten • Last bowel movement / emesis • Menstrual history (pregnancy) 	Signs and Symptoms: <ul style="list-style-type: none"> • Pain (location / migration) • Tenderness • Nausea • Vomiting • Diarrhea • Dysuria • Constipation • Vaginal bleeding / discharge • Pregnancy Associated symptoms: (Helpful to localize source) Fever, headache, weakness, malaise, myalgias, cough, headache, mental status changes, rash	Differential: <ul style="list-style-type: none"> • Pneumonia or Pulmonary embolus • Liver (hepatitis, CHF) • Peptic ulcer disease / Gastritis • Gallbladder • Myocardial infarction • Pancreatitis • Kidney stone • Abdominal aneurysm • Appendicitis • Bladder / Prostate disorder • Pelvic (PID, Ectopic pregnancy, Ovarian cyst) • Spleen enlargement • Diverticulitis • Bowel obstruction • Gastroenteritis (infectious)
--	---	--



Pearls:

- **Required Exam: Mental Status, Skin, HEENT, Neck, Heart, Lung, Abdomen, Back, Extremities, Neuro**
- Document the mental status and vital signs prior to administration of Phenergan.
- Abdominal pain in women of childbearing age should be treated as an ectopic pregnancy until proven otherwise.
- Antacids should be avoided in patients with renal disease
- The diagnosis of abdominal aneurysm should be considered with abdominal pain in patients over 50.
- Appendicitis presents with vague, peri-umbilical pain which migrates to the RLQ over time.