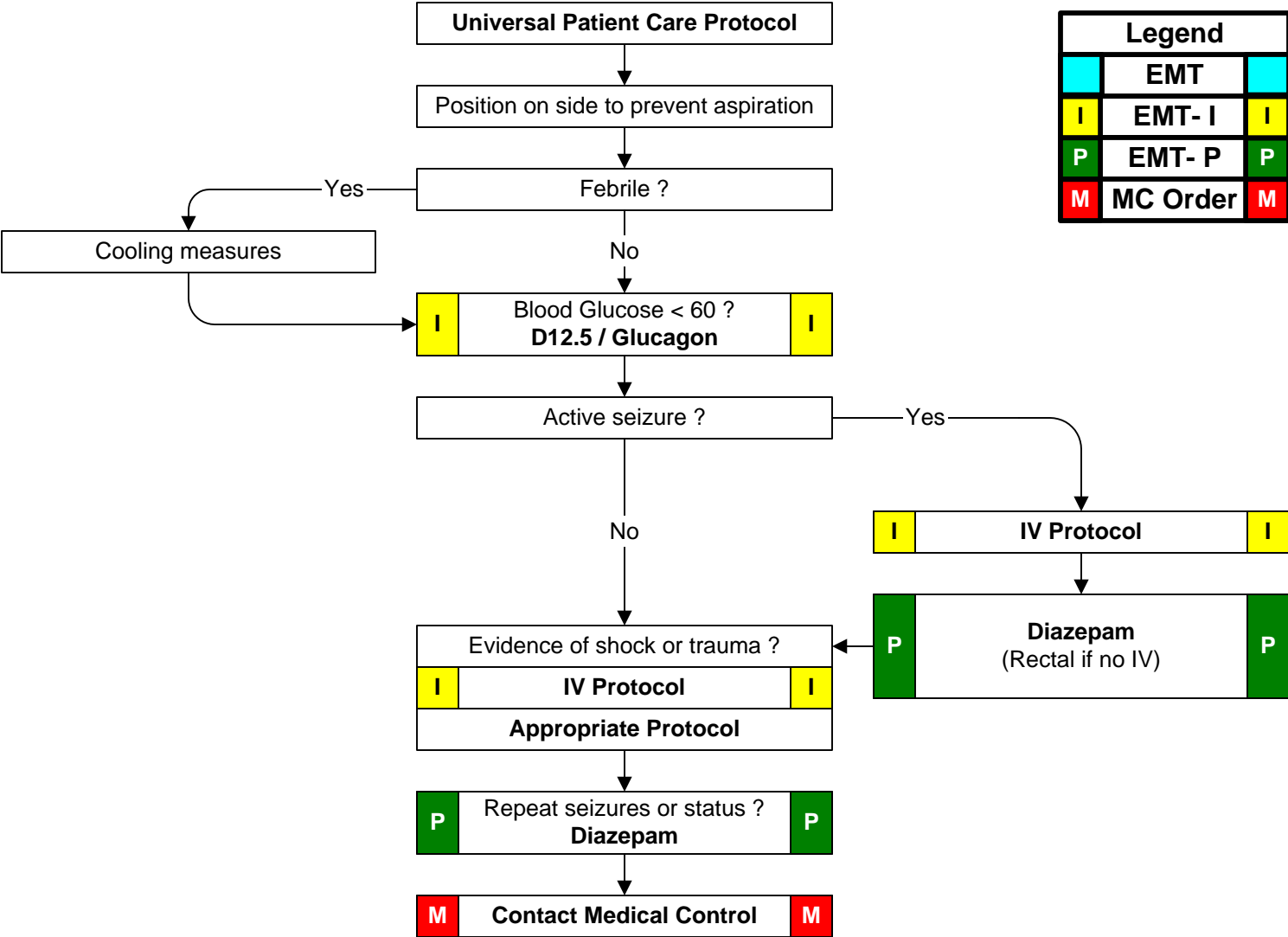




Pediatric Seizure



History: <ul style="list-style-type: none"> • Fever • Prior history of seizures • Seizure medications • Reported seizure activity • History of recent head trauma • Congenital abnormality 	Signs and Symptoms: <ul style="list-style-type: none"> • Observed seizure activity • Altered mental status • Hot, dry skin or elevated body temperature 	Differential: <ul style="list-style-type: none"> • Fever • Infection • Head trauma • Medication or Toxin • Hypoxia or Respiratory failure • Hypoglycemia • Metabolic abnormality / acidosis • Tumor
---	---	--



Pearls:

- **Exam: Mental Status, HEENT, Heart, Lungs, Extremities, Neuro**
- **Status Epilepticus** is defined as two or more successive seizures without a period of consciousness or recovery. This is a true emergency requiring rapid airway control, treatment, and transport.
- **Grand mal seizures** (generalized) are associated with loss of consciousness, incontinence, and tongue trauma.
- **Focal seizures (petit mal)** effect only a part of the body and are not usually associated with a loss of consciousness.
- **Jacksonian seizures** are seizures which start as a focal seizure and become generalized.
- Be prepared to assist ventilations especially if a benzodiazepine is used.
- If evidence or suspicion of trauma, spine should be immobilized.
- If febrile, remove clothing and sponge with room temperature water.
- **In an infant, a seizure may be the only evidence of a closed head injury.**