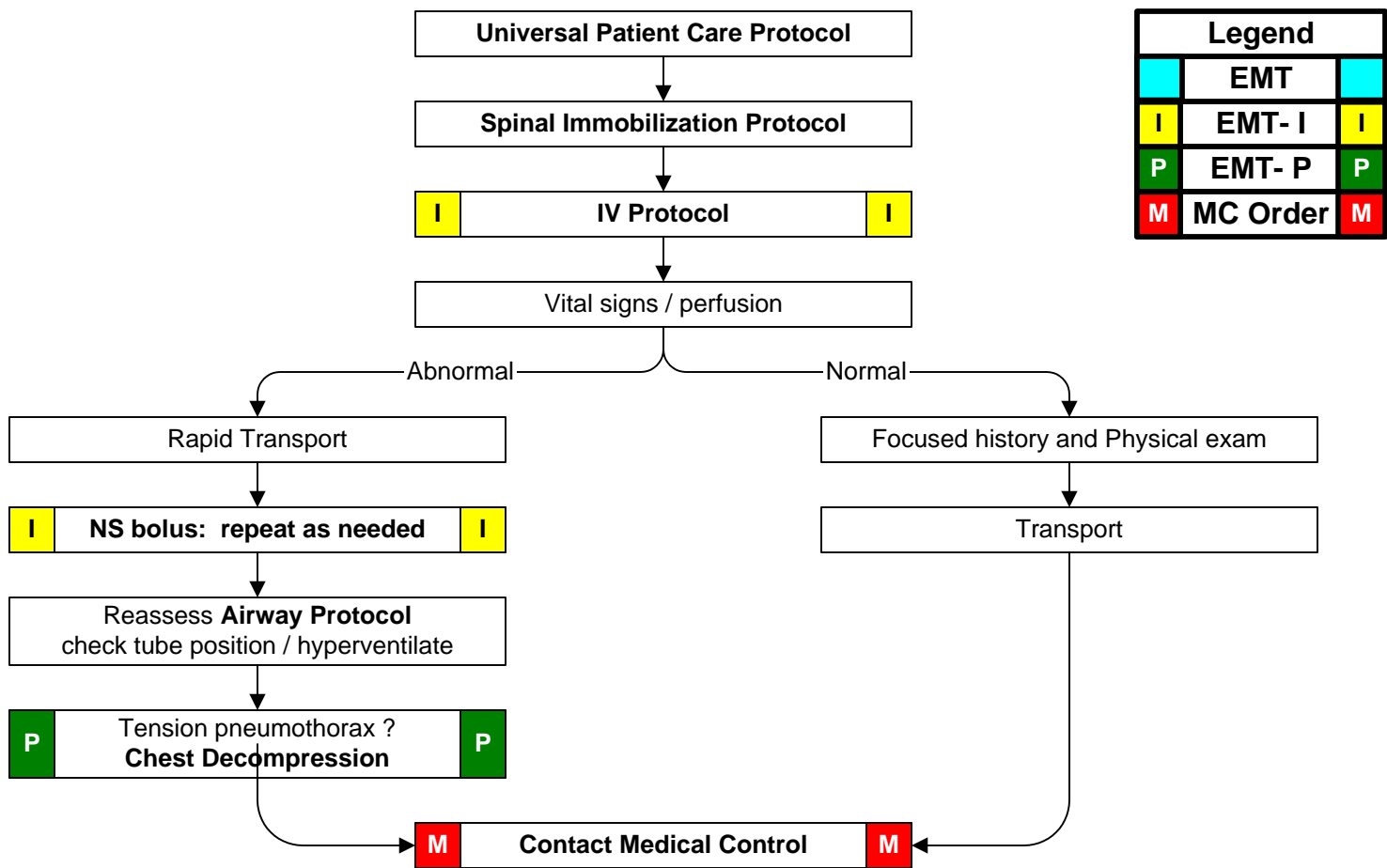




Pediatric Multiple Trauma



History: <ul style="list-style-type: none"> • Time and mechanism of injury • Damage to structure or vehicle • Location in structure or vehicle • Others injured or dead • Speed and details of MVC • Restraints / Protective equipment <ul style="list-style-type: none"> • Carseat • Helmet • Pads • Ejection • Past medical history • Medications 	Signs and Symptoms: <ul style="list-style-type: none"> • Pain, swelling • Deformity, lesions, bleeding • Altered mental status • Unconscious • Hypotension or shock • Arrest 	Differential (Life Threatening): <ul style="list-style-type: none"> • Chest <ul style="list-style-type: none"> • Tension pneumothorax • Flail chest • Pericardial tamponade • Open chest wound • Hemothorax • Intra-abdominal bleeding • Pelvis / Femur fracture • Spine fracture / Cord injury • Head injury (see Head Trauma) • Extremity fracture / dislocation • HEENT (Airway obstruction) • Hypothermia
---	---	---



Pearls:
Exam: Mental Status, Skin, HEENT, Heart, Lung, Abdomen, Extremities, Back, Neuro

- Mechanism is the most reliable indicator of serious injury. Examine all restraints / protective equipment for damage.
- In prolonged extrications or serious trauma consider air transportation for transport times and the ability to give blood.
- Do not overlook the possibility for child abuse.