



Obstetrical Emergency



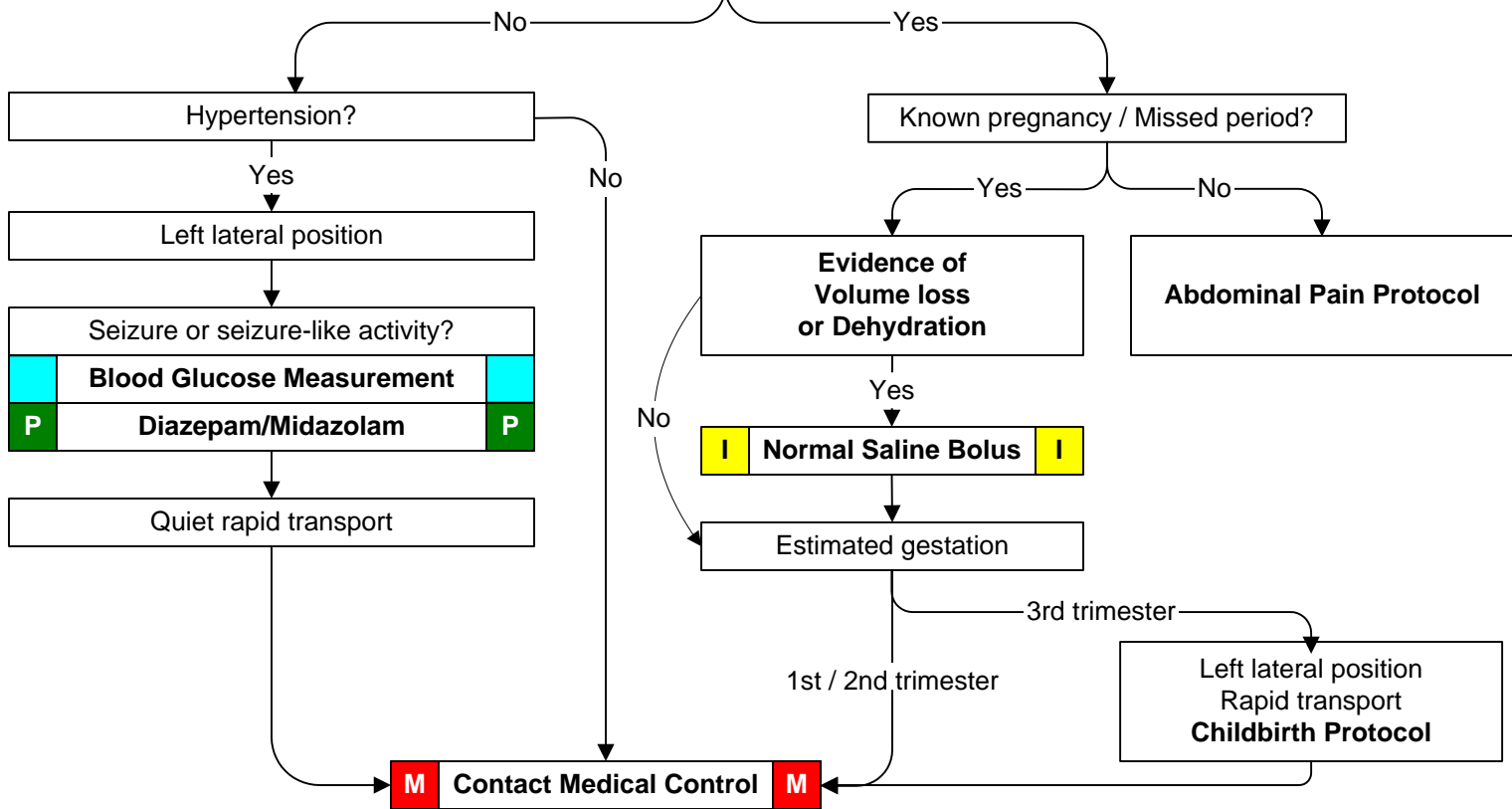
History: <ul style="list-style-type: none"> • Past medical history • Hypertension meds • Prenatal care • Prior pregnancies / births • Gravida / Para 	Signs and Symptoms: <ul style="list-style-type: none"> • Vaginal bleeding • Abdominal pain • Seizures • Hypertension • Severe headache • Visual changes • Edema of hands and face 	Differential: <ul style="list-style-type: none"> • Pre-eclampsia / Eclampsia • Placenta previa • Placenta abruptio • Spontaneous abortion
--	---	--

Universal Patient Care Protocol

I IV Protocol I

Vaginal bleeding / Abdominal pain ?

Legend		
I	EMT	I
I	EMT- I	I
P	EMT- P	P
M	MC Order	M



Pearls:

- **Exam: Mental Status, Abdomen, Heart, Lungs, Neuro**
- Severe headache, vision changes, or RUQ pain may indicate preeclampsia.
- In the setting of pregnancy, hypertension is defined as a BP greater than 140 systolic or greater than 90 diastolic, or a relative increase of 30 systolic and 20 diastolic from the patient's normal (pre-pregnancy) blood pressure.
- Maintain patient in a left lateral position to minimize risk of supine hypotensive syndrome.
- Ask patient to quantify bleeding - number of pads used per hour.
- Any pregnant patient involved in a MVC should be seen immediately by a physician for evaluation and fetal monitoring.